

OVERTON, LAVERSTOKE AND STEVENTON WARD - NOTIFICATION OF NEW PREMISES LICENCE APP - GRAND MAYNE (DURAS) LTD 17/00667/PREMN

This authority has received an application for a new premises licence under the Licensing Act 2003 as follows:

Applicant(s):	GRAND MAYNE (DURAS) LTD
Address of premises:	The Estate Office, Ashe Park, Overton, Basingstoke RG25 3AF
Proposed Licensable Activities: Sale by retail of alcohol. Mon to Sat 0900 to 1730. Internet sales will operate 24hr. Offsales only.	
Activities: The office is located in private grounds in the courtyard of a manor house from which business is operating for mainly internet sales of wine distilled at our vineyard located in France. Alcohol will be stored at the premises and delivered to our customers by a designated courier company. Some alcohol will be sold directly from the premises by appointment only.	

This application is currently under a 28 day consultation period. If you require any further information or wish to make any comment in support of, or representation against this application, you should do so in writing to the Head of Environmental Services, BDBC, Civic Offices, London Road, Basingstoke RG21 4AH, or by email to licensing@basingstoke.gov.uk

Any communication should be received no later than midnight on the 15 August 2017.

If you require any further information please contact the licensing team on 01256 844844 or by email licensing@basingstoke.gov.uk.

Regards

Karen Hill Licensing Officer Basingstoke and Deane Borough Council Tel: 01256 844844 Karen.Hill@basingstoke.gov.uk www.basingstoke.gov.uk **@BasingstokeGov @BasingstokeGov** Sign up to receive email updates on council services, news and events at



**Basingstoke
and Deane**



www.basingstoke.gov.uk/signup

Grand Mayne (Duras) Ltd: Premises Licence Application: plan of office

Background: The company supplies wine from a single vineyard in France to UK customers. Almost all our sales are made through delivery direct from the warehouse to customers' own premises. Therefore, we very rarely have members of the public visit our office premises at Ashe Park to collect wine. Even then, it is only by appointment.

The premises: Our office premises are drawn below in scale 1:50. This is a small, self-contained building on ground floor only. Internal area is 46 m². Visits to the office by members of the public are rare, perhaps once per month at most. The wine is stored in a secure warehouse which is alarmed, is anonymous (ie no signposting) and is not accessible by the public. Collections are made by courier firm from the warehouse, on average 3 times per week. A sketch of these premises is overleaf.

Symbols used in plan

A = entrance / exit to building

C = counter, or place where customers will be greeted (ie on rare occasion when wine is collected)

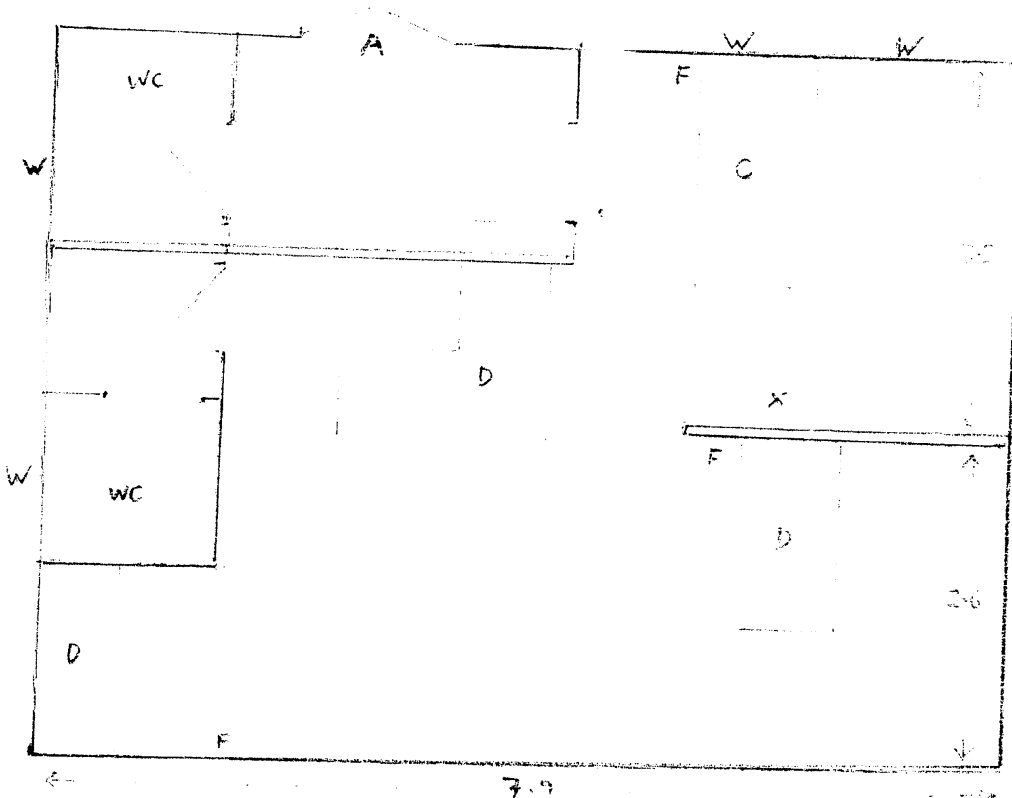
D = desk / work station

F = fire extinguisher

X = location of wine awaiting collection (ie on rare occasion when wine is collected)

W = opening window

THE OFFICE

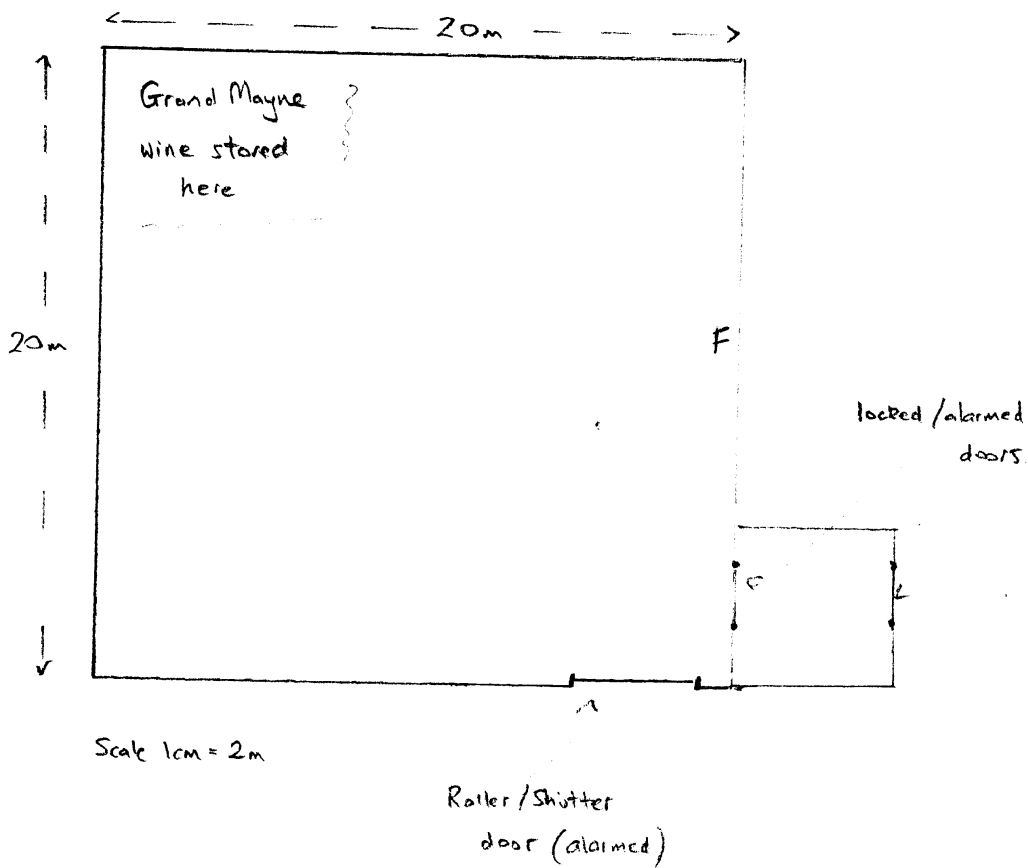


SCALE 1:50. 2cms = 1m

Access to the Estate: The warehouse and the office premises are both on a private estate with no public access. In particular, no children live at the estate and so no children would ever have access to our wine stored here.

Ashe Park Estate is accessed by three different drives, each drive having its own gate. The Fire Department has previously been given the access codes for the gates, but for completeness they are confirmed here.

The Warehouse: a steel frame barn, clad in tin. Used only for the purpose of short term storage of wine.



PREMISES PLAN

2.61 Acres
1.06 Ha

2.12 Acres
0.86 Ha

0.39 Acres
0.16 Ha

LICENCE
AREA IN
PURPLE

16.82 Acres
6.81 Ha

3.01 Acres
1.22 Ha

1.71 Acres
0.69 Ha

4.89 Acres
1.98 Ha

WAREHOUSE

26.58 Acres
10.76 Ha

4.62 Acres
1.87 Ha

ESTATE
OFFICE

0.93 Acres
0.38 Ha

Acres
7 Ha

8.97 Acres
3.63 Ha

0.20 Acres
0.08 Ha

Handwritten initials or signature in blue ink.

